

Aldreds
Estate Agents



6 Laurel Drive

Bradwell, Great Yarmouth, NR31 8PB

£240,000



6 Laurel Drive

Bradwell, Great Yarmouth, NR31 8PB

Sitting in this popular Bradwell location, Aldreds are delighted to offer this well presented and extended three bedroom house with approx. south facing garden and driveway to rear. Internally the property has an entrance hall, lounge, extended kitchen/diner and a cloakroom/utility on the ground floor. On the first floor there is a landing, three bedrooms and a large shower room. Gas central heating and double glazing. Offered with no chain

Entrance Hall

Door to side, stairs to landing, storage cupboard, radiator

Lounge

14'0" x 11'3" (4.28 x 3.45)

Double glazed window to front aspect, radiator

Kitchen/Diner

22'11" max 10'2" min x 14'10" max 6'10" min (7 max 3.1 min x 4.54 max 2.1 min)

Base & wall mounted storage units with worktops, double glazed French doors to rear, door to garden, wall mounted gas boiler, sink with drainer, gas cooker point, part tiled walls

Utility Room/Cloakroom

Low level WC, hand basin, opaque double glazed window to front aspect, plumbing for washing machine

Landing

Loft access

Bedroom 1

10'9" x 10'9" max (3.3 x 3.3 max)

Double glazed window to front aspect, radiator

Bedroom 2

10'3" x 9'6" (3.14 x 2.91)

Double glazed window to rear aspect, radiator





Bedroom 3

10'5" x 6'8" (3.18 x 2.05)

Built in wardrobes, double glazed window to front aspect, radiator

Shower Room

13'5" x 6'10" (4.1 x 2.1)

Flat floor shower, hand basin, low level WC, storage cupboard, two opaque double glazed windows to rear aspect, radiator

Outside

Paved garden to front. To the rear there is a paved garden and a gated driveway. The rear garden in approx. south facing

Tenure

Freehold

Services

Mains water, electricity, gas, drainage

Council Tax

Band B

Location

Bradwell is a popular residential area adjoining Gorleston 2 miles from Great Yarmouth Town centre * There are a variety of local shops * Schools * Medical centre * Regular bus services to the main shopping areas * Indoor swimming pool and recreation areas.

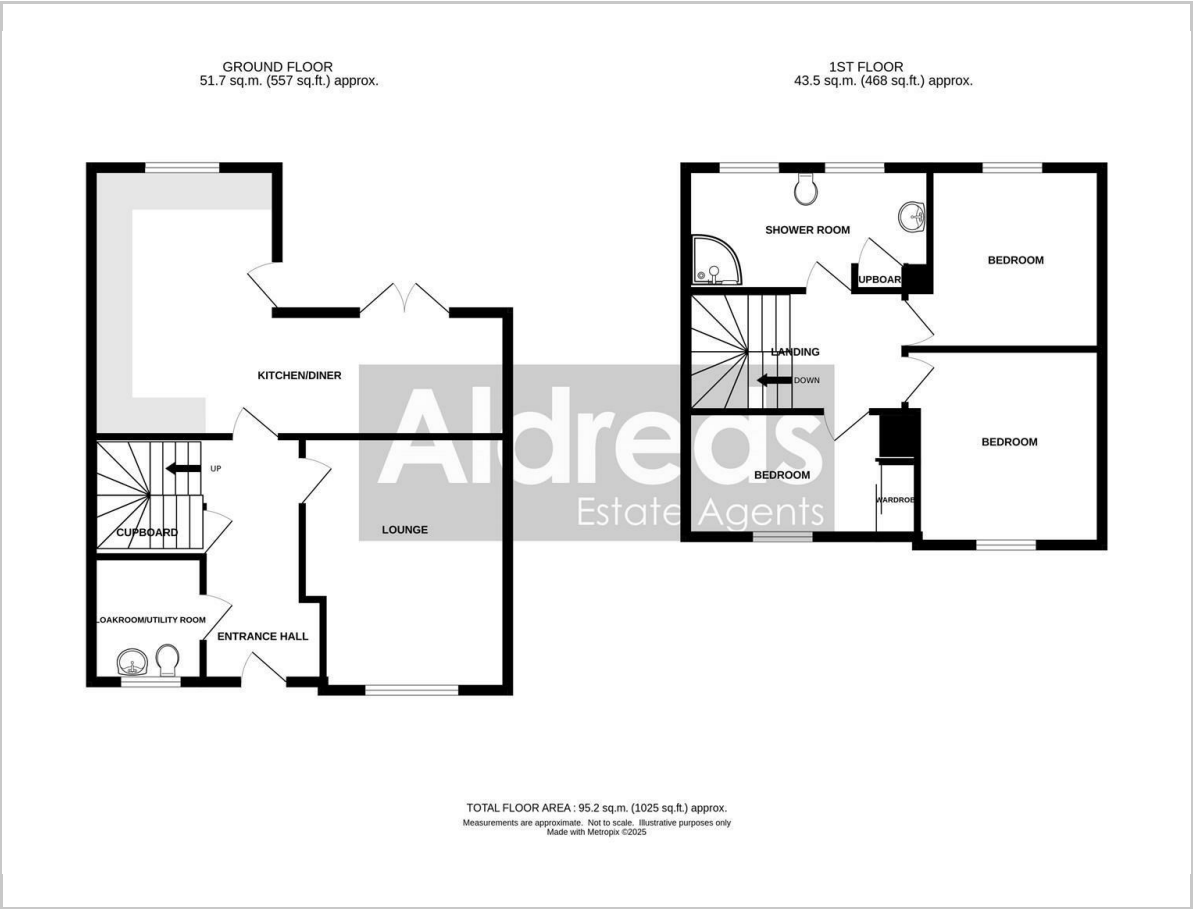
Directions

From the Gorleston office head south along the High Street, at the traffic lights turn right into Church Lane, continue over the roundabout and the next set of traffic lights into Crab Lane, at the 'T' junction turn left into Beccles Road, at the traffic lights take the second turning on the right into Church Lane, continue into Lords Lane, just after Hillside School turn right into Laurel Drive where the property can be found down the first walkway on the right hand side.

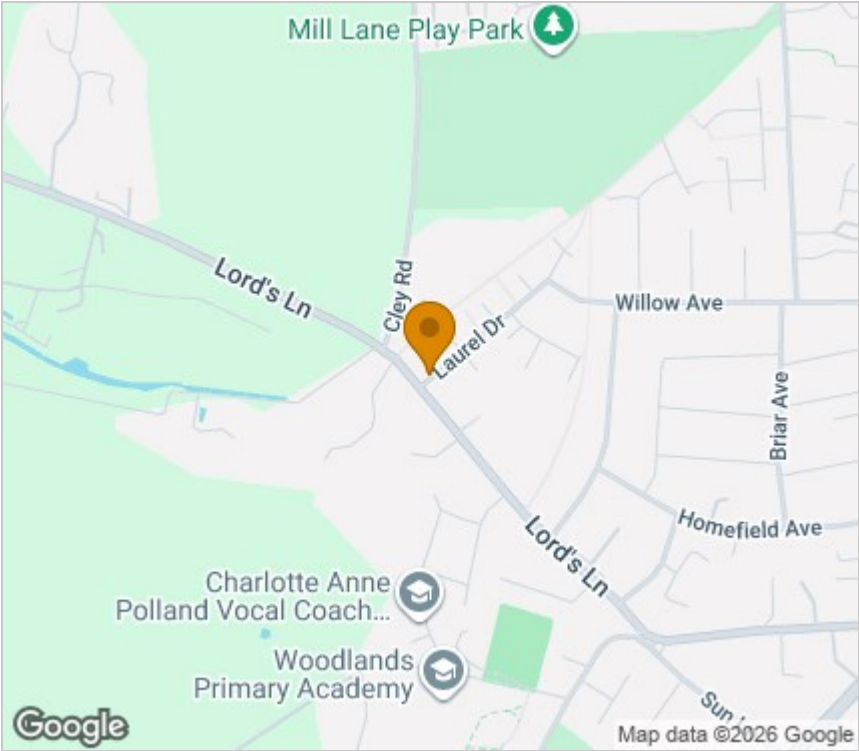
Ref G18221/01/25



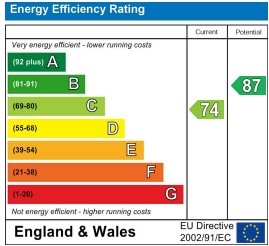
Floor Plan



Area Map



Energy Efficiency Graph



Viewing

Please contact our Aldreds Gorleston Office on 01493 664600 if you wish to arrange a viewing appointment for this property or require further information.

Disclaimer
These particulars are issued on an understanding that all negotiations shall be conducted through Messrs. Aldreds. Please note: Messrs. Aldreds for themselves and for the vendors or lessors of this property whose agents they are given notice that: 1. Particulars are set out as a general outline only for guidance of intending purchasers or lessees, and do not constitute nor constitute part of, an offer or contract. 2. All descriptions, dimensions, references to condition and necessary permissions for use and occupation, and other details are given without responsibility and any intending purchasers or tenants should not rely on them as statements or representations of fact but must satisfy themselves by inspection or otherwise as to the correctness of each of them. 3. No person in the employment of Messrs. Aldreds has any authority to make or give any representation or warranty whatever in relation to this property. 4. If you are proposing to visit the property and are travelling some distance please check with Aldreds on the issue of availability prior to travelling. 5. Aldreds Property Consultants and associated services may offer additional services to the prospective purchaser for which they will be entitled to receive a commission. Aldreds are pleased to be working with Mortgage Advice Bureau. They're an award-winning mortgage broker with over 1,400 advisers across the UK, and have access to over 12,000 mortgage products from over 90 lenders. Aldreds Estate Agents Ltd receive a commission of £200 on each completed case. Your home may be repossessed if you do not keep up repayments on your mortgage. There may be a fee for mortgage advice. The actual amount you pay will depend upon your circumstances. The fee is up to 1%, but a typical fee is 0.3% of the amount borrowed. Mortgage Advice Bureau is a trading name of Mortgage Seeker Limited which is an appointed representative of Mortgage Advice Bureau Limited and Mortgage Advice Bureau (Derby) Limited which are authorised and regulated by the Financial Conduct Authority. Mortgage Seeker Limited Registered Office: Lovewell Blake, Sixty Six North Quay, Great Yarmouth, Norfolk, NR30 1HE. Registered in England Number: 03721415. 6. Potential purchasers should check with their providers that the broadband and mobile phone coverage they would require is available.